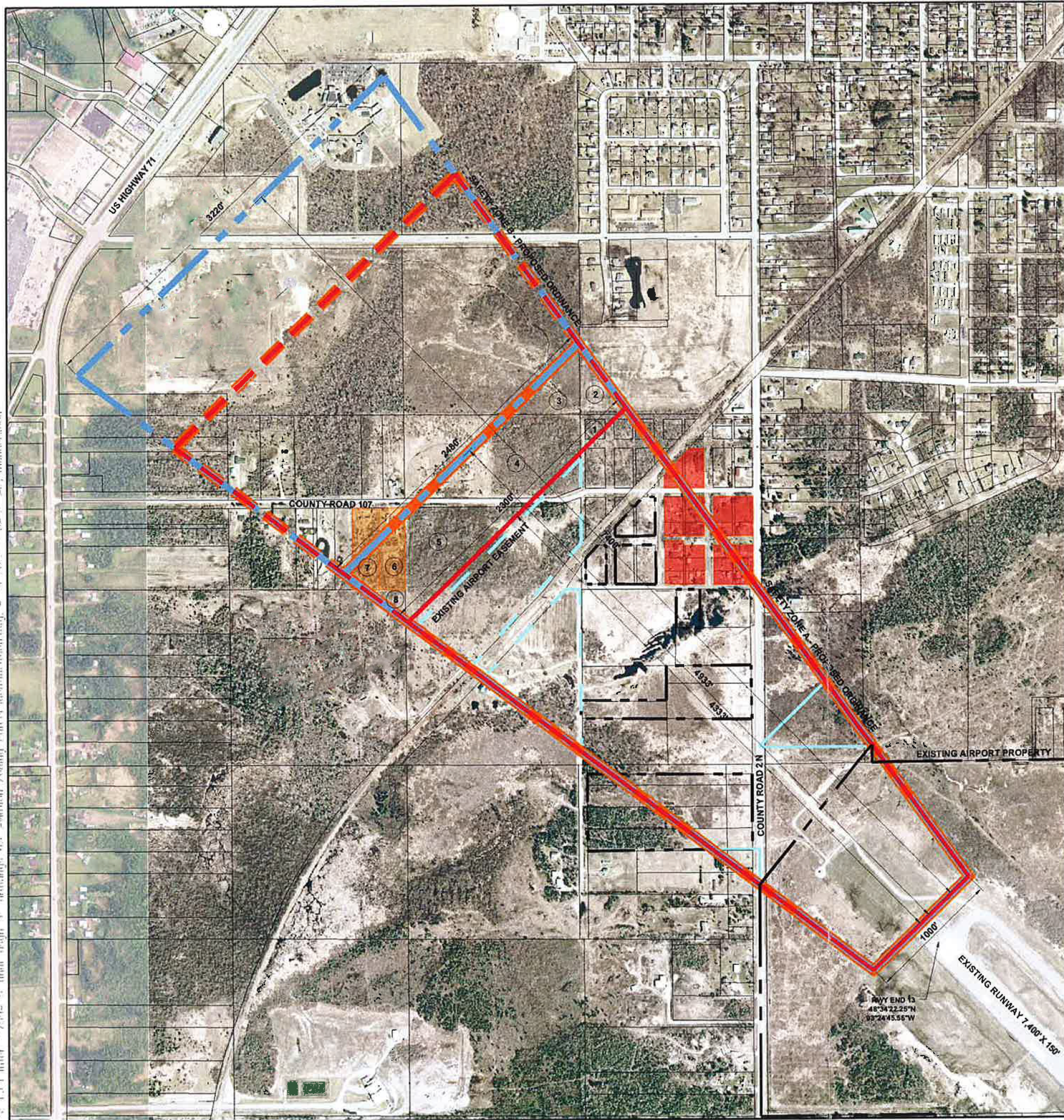


2013/04/15 11:20:12 to final design 47 drawings 45 revision County Council Resolution 04-20 2013-04-22 11:20:12



LEGEND

- EXIST. SAFETY ZONE A
 - - - - EXIST. SAFETY ZONE B
 - MN/DOT STANDARDS SAFETY ZONE A
 - - - - MN/DOT STANDARDS SAFETY ZONE B
 - PROPOSED SAFETY ZONE A
 - - - - PROPOSED SAFETY ZONE B
- EXISTING ESTABLISHED
RESIDENTIAL NEIGHBORHOOD

PROPOSED ESTABLISHED
RESIDENTIAL NEIGHBORHOOD

PROPOSED AIRPORT ZONING DIMENSIONS

RUNWAY	ZONE	INNER WIDTH	LENGTH	OUTER WIDTH	SLOPE
13	SAFETY ZONE A	1,000'	4,933'	2,480'	50:1
	SAFETY ZONE B	2,480'	1,567'	2,950'	50:1
	SAFETY ZONE C	10,000' RADIUS FROM END OF PRIMARY SURFACE			

Use Restrictions:

General: Subject at all times to the height restrictions set forth in Section IV B, no use shall be made of any land in any of the safety zones defined in Section V A which creates or causes interference with the operations of radio or electronic facilities on the airport or with radio or electronic communications between the airport and aircraft, make it difficult for pilots to distinguish between airport lights and other lights, results in glare in the eyes of pilots using the airport, impairs visibility in the vicinity of the airport, or otherwise endangers the landing, taking off, or maneuvering of aircraft.

Zone "A": Shall contain no buildings, temporary structures, exposed transmission lines, or other similar above-ground land use structural hazards, and shall be restricted to those uses; which will not create, attract, or bring together an assembly of persons thereon. Permitted uses may include, but are not limited to, such uses as agriculture (seasonal crops), horticulture, raising of livestock, animal husbandry, wildlife habitat, light outdoor recreation (nonspectator), cemeteries, and automobile parking.

Zone "B" shall be restricted in use as follows. Each use shall be on a site whose area shall not be less than 2.5 acres. Each use shall not create, attract, or bring together a site population that would exceed 15 times that of the site acreage. Each site shall have no more than one building plot upon which any number of structures may be erected. The following uses are specifically prohibited in Zone B: churches, hospitals, schools, theaters, stadiums, hotels and motels, trailer courts, camp grounds, and other places of public or semipublic assembly.

Zone "C" is subject only to the general restrictions contained in item A (in the Zoning Ordinance). Safety Zone "C" is enclosed within the perimeter of the horizontal zone as defined in the Zoning Ordinance.

PARCEL IDENTIFICATION CHANGES

MAP NUMBER	PARCEL ID	TOTAL ACRES	EXISTING ZONING OVERLAY	FUTURE ZONING OVERLAY	CHANGE IN ZONING
1	21-060-03010 STATE OF MN	0.51	0.08 ACRES IN EXISTING ZONE A 0.43 ACRES IN EXISTING ZONE B	0.51 ACRES IN FUTURE ZONE A	+0.43 ACRES IN ZONE A -0.43 ACRES IN ZONE B
2	92-150-14000 BOLSTAD, R & K AND SHANNON, A & L	24.80	2.34 ACRES IN EXISTING ZONE B	2.34 ACRES IN FUTURE ZONE A	+2.34 ACRES IN ZONE A -2.34 ACRES IN ZONE B
3	92-150-13000 LEMBUEX, MARLA	38.61	34.11 ACRES IN EXISTING ZONE B	3.54 ACRES IN FUTURE ZONE A 30.57 ACRES IN FUTURE ZONE B	+3.54 ACRES IN ZONE A -3.54 ACRES IN ZONE B
4	21-051-00080 JOHNSON, JENOME	19.00	1.21 ACRES IN EXISTING ZONE A 17.77 ACRES IN EXISTING ZONE B	12.63 ACRES IN FUTURE ZONE A 6.35 ACRES IN FUTURE ZONE B	+11.42 ACRES IN ZONE A -11.42 ACRES IN ZONE B
5	21-051-00080 JOHNSON, JENOME	30.99	17.15 ACRES IN EXISTING ZONE A 8.17 ACRES IN EXISTING ZONE B	26.32 ACRES IN FUTURE ZONE A	+8.17 ACRES IN ZONE A -8.17 ACRES IN ZONE B
6	21-051-00280 VACURA, RONALD & RUTH	2.81	2.81 ACRES IN EXISTING ZONE B	2.16 ACRES IN FUTURE ZONE A 0.65 ACRES IN FUTURE ZONE B	+2.16 ACRES IN ZONE A -2.16 ACRES IN ZONE B
7	21-051-00282 GARTZKE, RYAN	2.80	2.73 ACRES IN EXISTING ZONE B	1.21 ACRES IN FUTURE ZONE A 1.52 ACRES IN FUTURE ZONE B	+1.21 ACRES IN ZONE A -1.21 ACRES IN ZONE B
8	21-064-34000 WALTER, MAJAK & TAKAS	39.05	0.81 ACRES IN EXISTING ZONE B	0.81 ACRES IN FUTURE ZONE A	+0.81 ACRES IN ZONE A -0.81 ACRES IN ZONE B



2025 VARNUM CENTER DR
 ST PAUL, MN 55108
 TEL: 651.489.2200
 FAX: 651.489.2203
 WWW.SEHINC.COM

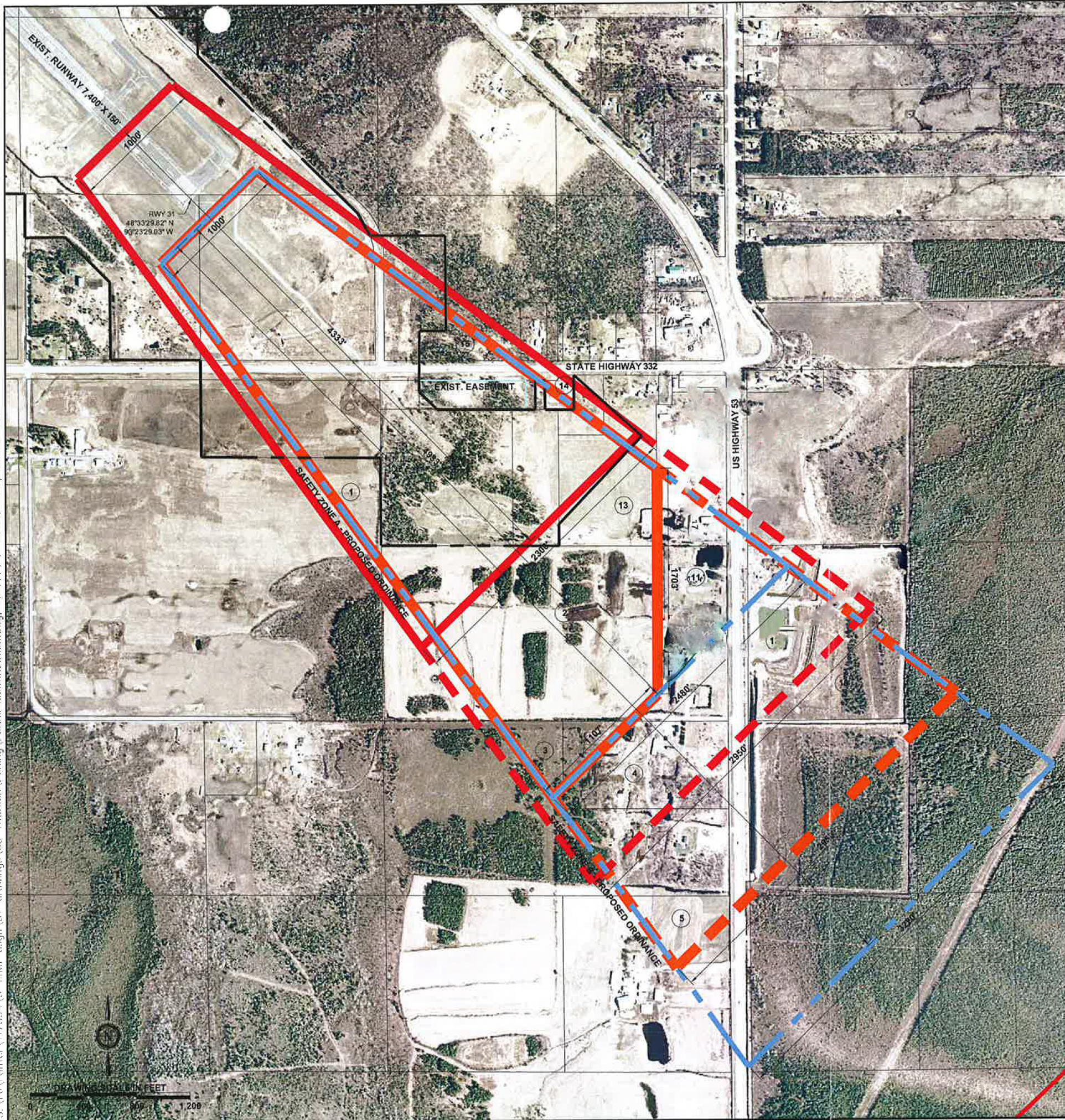
SEH FILE NO. INTER 117549
 ISSUE DATE APRIL 19, 2012
 DESIGNED BY MRU
 DRAWN BY MRU
 SEH, INC. 2004 Short Bluff, Minneapolis, MN 55425
 © 2004 SEH, Inc.

FALLS INTERNATIONAL
 AIRPORT

RUNWAY 13
 PROPOSED ORDINANCE

EXHIBIT
 A

S:\1\1171994\5 - final design\5 - final drawings\5 - Aviation\Zoning\Parcel Identification.dwg, 4/19/2012 11:10:26 AM, mtratorwood



LEGEND

- EXIST. SAFETY ZONE A
- - - - EXIST. SAFETY ZONE B
- MN/DOT STANDARDS SAFETY ZONE A
- - - - MN/DOT STANDARDS SAFETY ZONE B
- PROPOSED SAFETY ZONE A
- - - - PROPOSED SAFETY ZONE B

PROPOSED AIRPORT ZONING DIMENSIONS

RUNWAY	ZONE	INNER WIDTH	LENGTH	OUTER WIDTH	SLOPE
31	SAFETY ZONE A	1,000'	4,933'	2,480'	50:1
	SAFETY ZONE B	2,480'	1,567'	2,950'	50:1
	SAFETY ZONE C	10,000' RADIUS FROM END OF PRIMARY SURFACE			

Use Restrictions:

General: Subject at all times to the height restrictions set forth in Section IV B, no use shall be made of any land in any of the safety zones defined in Section V A which creates or causes interference with the operations of radio or electronic facilities on the airport or with radio or electronic communications between the airport and aircraft, make it difficult for pilots to distinguish between airport lights and other lights, results in glare in the eyes of pilots using the airport, impairs visibility in the vicinity of the airport, or otherwise endangers the landing, taking off, or maneuvering of aircraft.

Zone "A": Shall contain no buildings, temporary structures, exposed transmission lines, or other similar above-ground land use structural hazards, and shall be restricted to those uses which will not create, attract, or bring together an assembly of persons thereon. Permitted uses may include, but are not limited to, such uses as agriculture (seasonal crops), horticulture, raising of livestock, animal husbandry, wildlife habitat, light outdoor recreation (nonspectator), cemeteries, and automobile parking.

Zone "B" shall be restricted in use as follows. Each use shall be on a site whose area shall not be less than 2.5 acres. Each use shall not create, attract, or bring together a site population that would exceed 15 times that of the site acreage. Each site shall have no more than one building plot upon which any number of structures may be erected. The following uses are specifically prohibited in Zone B: churches, hospitals, schools, theaters, stadiums, hotels and motels, trailer courts, camp grounds, and other places of public or semipublic assembly.

Zone "C" is subject only to the general restrictions contained in item A (in the Zoning Ordinance). Safety Zone "C" is enclosed within the perimeter of the horizontal zone as defined in the Zoning Ordinance.

PARCEL IDENTIFICATION CHANGES

MAP NUMBER	PARCEL ID	TOTAL ACRES	EXISTING ZONING OVERLAY	FUTURE ZONING OVERLAY	CHANGE IN ZONING
1	21-014-31100 EWALD, BILL & DONALD & ROBERT	136.21	6.66 ACRES IN EXISTING ZONE A	5.21 ACRES IN FUTURE ZONE A	-3.45 ACRES IN ZONE A
	21-014-43000 BAHR, FRANKLIN				+39.83 ACRES IN ZONE A -43.93 ACRES IN ZONE B
3	21-023-11000 FISH, DUANE & MARY	59.42	12.54 ACRES IN EXISTING ZONE B	3.71 ACRES IN FUTURE ZONE A 15.72 ACRES IN FUTURE ZONE B	+3.71 ACRES IN ZONE A +3.18 ACRES IN ZONE B
	21-023-11100 FISH, TROY & ELIZABETH				+2.93 ACRES IN FUTURE ZONE A 18.42 ACRES IN FUTURE ZONE B
5	21-023-14000 BAHR, FRANKLIN	37.91	0.00 ACRES IN EXISTING ZONE B	9.99 ACRES IN FUTURE ZONE B	+9.99 ACRES IN ZONE B
7	21-024-22000 BAHR, ROBERT	38.21	0.05 ACRES IN EXISTING ZONE B	38.18 ACRES IN FUTURE ZONE B	+38.13 ACRES IN ZONE B
9	21-013-34000 STATE OF MN	40.43	0.00 ACRES IN EXISTING ZONE B	2.70 ACRES IN FUTURE ZONE B	+2.70 ACRES IN ZONE B
10	21-013-33000 BAHR, ROBERT	38.18	16.66 ACRES IN EXISTING ZONE B	1.73 ACRES IN FUTURE ZONE A 24.66 ACRES IN FUTURE ZONE B	+1.73 ACRES IN ZONE A +8.00 ACRES IN ZONE B
	21-014-44000 PECK, LEROY & CHARLENE				5.46
12	21-014-41300 BAHR, GORDON & PATRICIA	13.71	6.72 ACRES IN EXISTING ZONE B	4.67 ACRES IN FUTURE ZONE B	-2.05 ACRES IN ZONE B
13	21-014-41100 RAMBO, KEVIN	12.76	9.13 ACRES IN EXISTING ZONE B	8.56 ACRES IN FUTURE ZONE A	+8.56 ACRES IN ZONE A -8.13 ACRES IN ZONE B
14	21-014-41400 MINNKOTA POWER COOR INC	1.20	1.13 ACRES IN EXISTING ZONE A	0.53 ACRES IN FUTURE ZONE A	-0.60 ACRES IN ZONE A
15	21-014-13000 PULLAR, ROBERT & DORIS	26.48	5.13 ACRES IN EXISTING ZONE A	3.18 ACRES IN FUTURE ZONE A	-2.13 ACRES IN ZONE A

3535 VARNAS CENTER DR
ST PAUL, MN 55110
FAX 651 492 2100
WATTS 651 492 2100
www.sehinc.com

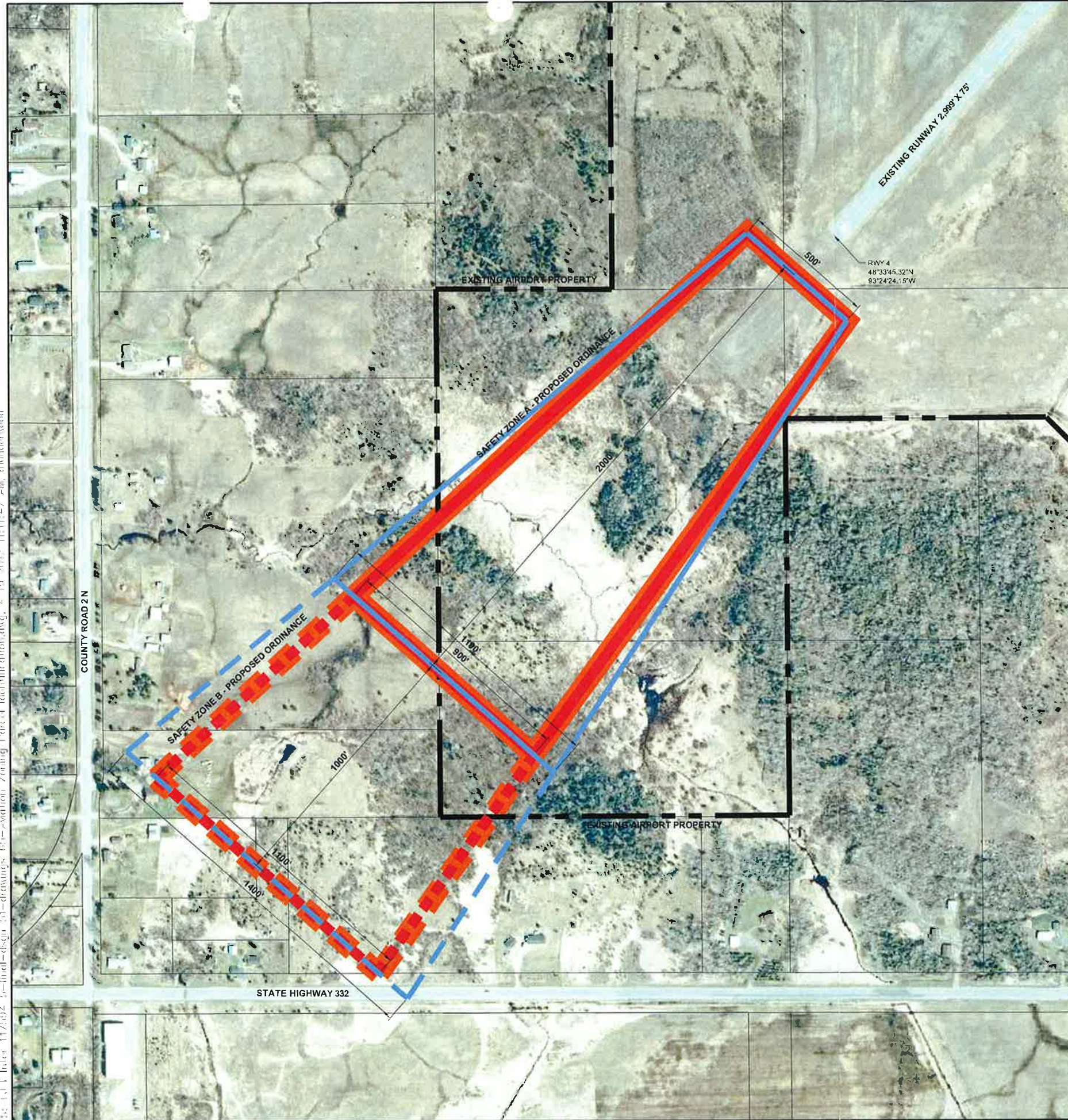
SEH FILE NO. INTER 117549
ISSUE DATE APRIL 19, 2012
DESIGNED BY MRU
DRAWN BY MRU
Shea Elicit Hendrickson, Inc. (SEH)
© 2004 Shea Elicit Hendrickson, Inc.

FALLS INTERNATIONAL AIRPORT

RUNWAY 31 PROPOSED ORDINANCE

EXHIBIT B

I:\Projects\117549\117549-01-drawings\01-Station\Zoning\Parcel Identification.dwg, 4/19/2012 11:11:47 AM, unmodified



LEGEND

- EXIST. SAFETY ZONE A — PROPOSED SAFETY ZONE A
- - - EXIST. SAFETY ZONE B - - - PROPOSED SAFETY ZONE B
- MN/DOT STANDARDS SAFETY ZONE A
- - - MN/DOT STANDARDS SAFETY ZONE B

PROPOSED AIRPORT ZONING DIMENSIONS

RUNWAY	ZONE	INNER WIDTH	LENGTH	OUTER WIDTH	SLOPE
04	SAFETY ZONE A	500'	2,000'	900'	40:1
	SAFETY ZONE B	900'	1,000'	1,100'	40:1
	SAFETY ZONE C	6,000' RADIUS FROM END OF PRIMARY SURFACE			

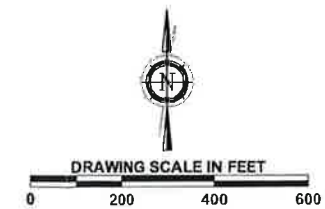
Use Restrictions:

General: Subject at all times to the height restrictions set forth in Section IV B, no use shall be made of any land in any of the safety zones defined in Section V A which creates or causes interference with the operations of radio or electronic facilities on the airport or with radio or electronic communications between the airport and aircraft, make it difficult for pilots to distinguish between airport lights and other lights, results in glare in the eyes of pilots using the airport, impairs visibility in the vicinity of the airport, or otherwise endangers the landing, taking off, or maneuvering of aircraft.

Zone "A": Shall contain no buildings, temporary structures, exposed transmission lines, or other similar above-ground land use structural hazards, and shall be restricted to those uses which will not create, attract, or bring together an assembly of persons thereon. Permitted uses may include, but are not limited to, such uses as agriculture (seasonal crops), horticulture, raising of livestock, animal husbandry, wildlife habitat, light outdoor recreation (nonspectator), cemeteries, and automobile parking.

Zone "B" shall be restricted in use as follows. Each use shall be on a site whose area shall not be less than 2.5 acres. Each use shall not create, attract, or bring together a site population that would exceed 15 times that of the site acreage. Each site shall have no more than one building plot upon which any number of structures may be erected. The following uses are specifically prohibited in Zone B: churches, hospitals, schools, theaters, stadiums, hotels and motels, trailer courts, camp grounds, and other places of public or semipublic assembly.

Zone "C" is subject only to the general restrictions contained in item A (in the Zoning Ordinance). Safety Zone "C" is enclosed within the perimeter of the horizontal zone as defined in the Zoning Ordinance.



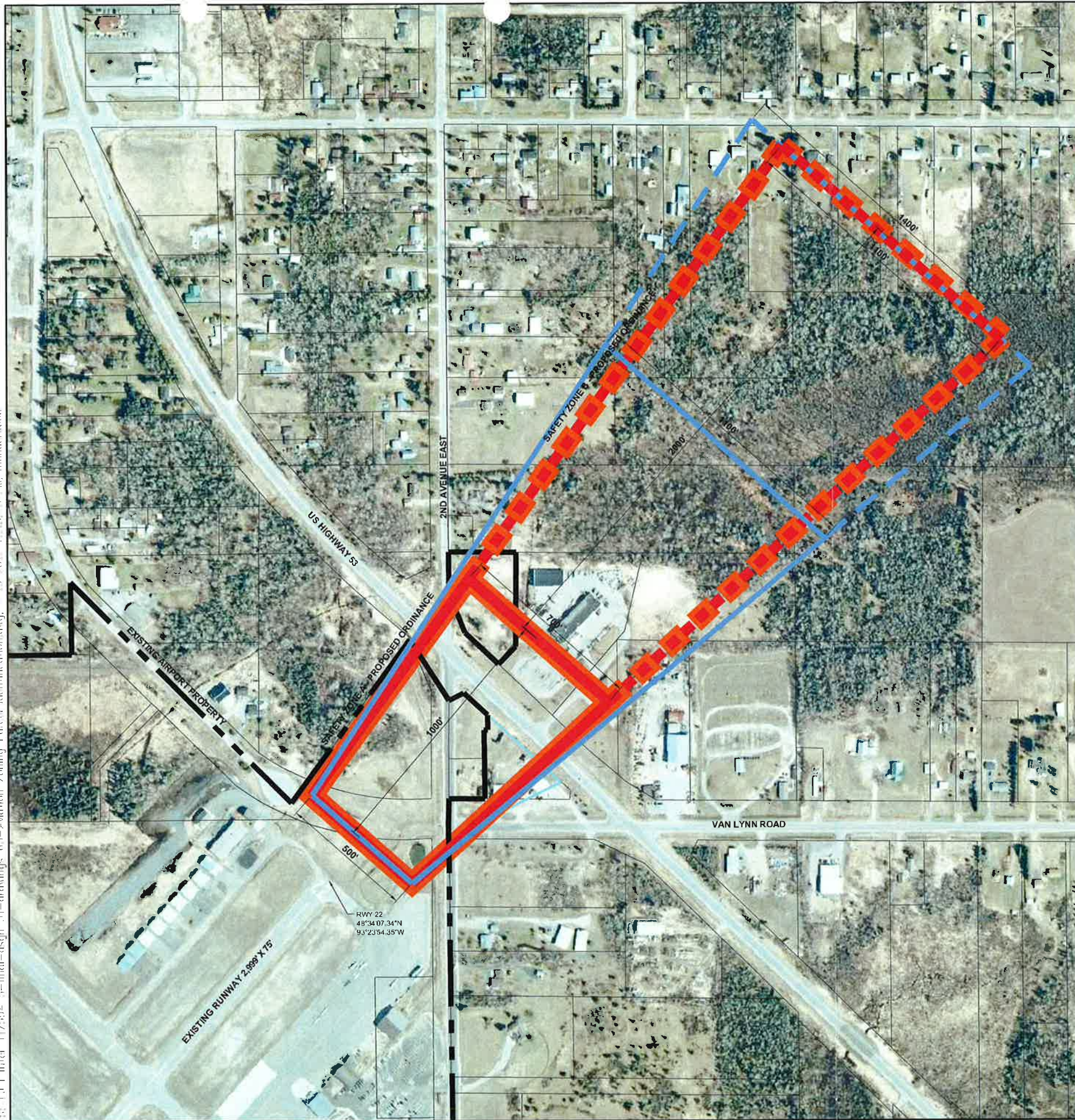
SEH FILE NO. INTER 117549
 ISSUE DATE APRIL 19, 2012
 DESIGNED BY MRU
 DRAWN BY MRU
 SEH File: Hendricks, Inc. © (SEH)
 © 2012 Site: Elbert Hendricks, Inc.

FALLS INTERNATIONAL AIRPORT

RUNWAY 4 PROPOSED ORDINANCE

EXHIBIT C

E:\1.1.1.1 Inter 11/7/12 1-11-drawings 63--aerial Zoning Parcels Identification.dwg, 4:19:2009, 11-11-12, 2.3 - 11, unmodified



LEGEND

- EXIST. SAFETY ZONE A
- EXIST. SAFETY ZONE B
- MN/DOT STANDARDS SAFETY ZONE A
- MN/DOT STANDARDS SAFETY ZONE B
- PROPOSED SAFETY ZONE A
- PROPOSED SAFETY ZONE B

PROPOSED AIRPORT ZONING DIMENSIONS

RUNWAY	ZONE	INNER WIDTH	LENGTH	OUTER WIDTH	SLOPE
22	SAFETY ZONE A	500'	1,000'	700'	40:1
	SAFETY ZONE B	700'	2,000'	1,100'	40:1
	SAFETY ZONE C	6,000' RADIUS FROM END OF PRIMARY SURFACE			

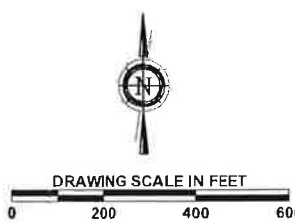
Use Restrictions:

General: Subject at all times to the height restrictions set forth in Section IV B, no use shall be made of any land in any of the safety zones defined in Section V A which creates or causes interference with the operations of radio or electronic facilities on the airport or with radio or electronic communications between the airport and aircraft, make it difficult for pilots to distinguish between airport lights and other lights, results in glare in the eyes of pilots using the airport, impairs visibility in the vicinity of the airport, or otherwise endangers the landing, taking off, or maneuvering of aircraft.

Zone "A": Shall contain no buildings, temporary structures, exposed transmission lines, or other similar above-ground land use structural hazards, and shall be restricted to those uses which will not create, attract, or bring together an assembly of persons thereon. Permitted uses may include, but are not limited to, such uses as agriculture (seasonal crops), horticulture, raising of livestock, animal husbandry, wildlife habitat, light outdoor recreation (nonspectator), cemeteries, and automobile parking.

Zone "B" shall be restricted in use as follows. Each use shall be on a site whose area shall not be less than 2.5 acres. Each use shall not create, attract, or bring together a site population that would exceed 15 times that of the site acreage. Each site shall have no more than one building plot upon which any number of structures may be erected. The following uses are specifically prohibited in Zone B: churches, hospitals, schools, theaters, stadiums, hotels and motels, trailer courts, camp grounds, and other places of public or semipublic assembly.

Zone "C" is subject only to the general restrictions contained in item A (in the Zoning Ordinance). Safety Zone "C" is enclosed within the perimeter of the horizontal zone as defined in the Zoning Ordinance.



2525 VANDANAS CENTER, JR
 ST PAUL, MN 55108
 TEL: 651.489.9100
 FAX: 651.489.9100
 WWW.SEHINC.COM



SEH FILE NO. INTER 117594
 ISSUE DATE APRIL 19, 2012
 DESIGNED BY MRU
 DRAWN BY MRU
 Sheet Elliott Herd/Seaton, Inc. (SEH)
 © 2004 Sheet Elliott Herd/Seaton, Inc.

FALLS INTERNATIONAL AIRPORT

RUNWAY 22 PROPOSED ORDINANCE

EXHIBIT

D